

# IMPORTANT NOTICES

- **First Day of School** - Please plan to arrive early on the first day of school so your child has time to put his/her backpack away. Students at Stein Circle begin their day promptly at 8:10AM. Students at Wells Avenue begin their day promptly at 8:00AM.

Students will begin their first day at the following locations:

- Kindergarten: See attached schedule
- Grades 1-3: Second Room listed on top left of class list
- Grade 4: Section 4A – Room 109, 4B – 113, 4C – 125, 4D – 117 (sections indicated on class list)
- Grade 5: Leave backpacks in classroom listed here, then report to Lower Rear Forum with your Siddur. Section 5A – Room 111, 5B – 121, 5C – 119
- Grade 6: Leave backpacks in any cubby located in the Grade 6 hall, then go to the Beit Tefillah.
- Grade 7 & 8: Leave backpacks in any cubby located in the Grade 7 & 8 hall, then go to the Beit Tefillah with your Siddur.

- **Back to School Nights**

This is a wonderful opportunity for parents to meet their child(ren)'s teachers and learn about procedures and curriculum for the year. Please make every effort to have at least one parent attend the appropriate Back to School night.

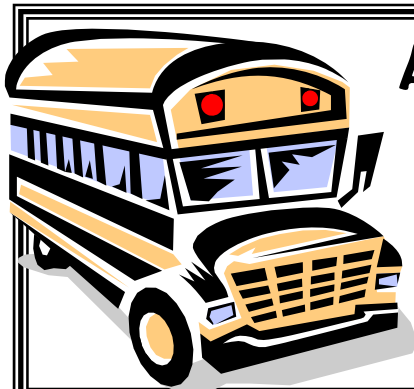
Grade K	— Monday,	September 12,	7:30PM,	Lower School
Grade 1 & 2	— Thursday,	September 15,	7:30PM,	Lower School
Grades 3	— Tuesday,	September 20,	7:30PM,	Lower School
Grades 4 & 5	— Wednesday,	September 21,	7:00PM,	Upper School
Grade 6	— Monday,	September 19,	7:00PM,	Upper School
Grade 7	— Monday,	September 29,	7:30PM,	Upper School
Grade 8	— Tuesday,	September 13,	6:30PM,	Upper School

- **Shavuon Reminder**

Shavuon, Schechter's weekly newsletter, is delivered by e-mail only. Be sure to stay connected and informed. Fill out our e-mail communication form in order to receive the Shavuon via e-mail.

- **Important Note From The Nurse**

- **Head Lice:** *It is important for parents to check each child's head carefully for head lice before the first day of school.* If you have questions about how to check properly, please contact the Head School Nurse (617-630-4507) and she will help guide you. Affected children must be treated appropriately at home before school begins and you must inform the Head School Nurse, who will deal with the information confidentially. Additionally, it is very helpful if parents inform the Head School Nurse if their child experienced head lice at any time over the summer, even if it no longer seems to be an active problem.



**Attention Newton Parents:**

**YES! There WILL be  
Newton buses  
the first day of school.**





LEARNING & VALUES  
for Life

Av 5771  
August 2011

Dear Parents,

Welcome back! And to our new families, B'ruchim Haba'im!

It is my pleasure to share with you this first official mailing of the 2011-2012 school year. I anticipate a fabulous year of learning and growing for all our students, and I look forward to greeting you and your children in September.

Similar to last year, this mailing is much smaller than in years prior, as the school has moved the majority of the August Packet online. In this envelope, you will find class lists, birthday lists, and bar/bat mitzvah lists (Grades 4 – 8). For privacy reasons, class lists and birthday lists are not posted online.

Please use the following to link to the school website –

[www.ssdsboston.org/parentsFamilies/augustpacket.php](http://www.ssdsboston.org/parentsFamilies/augustpacket.php) - where you will find all of the essential information and forms. Locate your child(ren)'s grade(s) and then click on the two links below the grade heading – one has the documents you need to print, sign and return to the school in the enclosed envelope, and the second contains important information for you to read. Please note that many forms contain lines for you to enter the names of all your children at Schechter, and therefore these forms do not need to be filled out separately for each child.

You also should have received the summer edition of the online Shavuon, the Schechter parent newsletter. Beginning on the first day of school, it will be sent to you twice weekly by e-mail. On the first day of the school week (usually Monday), you will receive a Shavuon in your e-mail inbox that will include general information from the school, the Parent Association, along with messages from faculty and staff, and my weekly column. The second Shavuon will be sent on the last day of the school week (usually Friday), containing a calendar for the next two weeks, a printable monthly calendar, Lower School and Upper School announcements and a *d'var Torah* for the upcoming Shabbat. And, as we introduced last year, the weekly calendar will always be posted on the digital marquees in the school lobbies.

This year promises to be an exciting year at Schechter. So much has been done to prepare for the coming school year; this includes important improvements in our cross-discipline approach to the teaching of science, math, engineering and technology (commonly referred to 'STEM'). Additionally, we will now be working closely with teachers in grades one through five to fully integrate our new weekday siddur for children, *Halleli Nafshi*, helping each child find greater meaning and connection in the

words and ideas expressed there. Finally, we are pleased to welcome Rabbi Scott Slarskey in his new role as Upper School Principal. Rabbi Slarskey, along with Barbara Shea (Associate Head for Program and Instruction) and Dr. Mindy Pincus (Lower School Principal) now form an outstanding program leadership team that will help our teachers provide even stronger instruction that will not only prepare the children well, but also will inspire, nurture and celebrate each and every one of them.

Here at SSDS, we keep the well being of our children, their academic growth and their connection to the Jewish identity at the center, and because of that – and because we’re always trying to improve and to innovate – I know this will be a wonderful year. We look forward to welcoming you and your children on our first day of classes, Thursday, September 8.

B'Shalom,

Arnold Zar-Kessler  
Head of School

LEARNING & VALUES  
*for Life*



Av 5771  
August 2011

Dear Parents,

It is with genuine enthusiasm that we welcome you and your children to the 2011-2012/5771-5772 school year. We are honored that you have entrusted us with the responsibility of educating your children, and are deeply committed to helping them continue to grow as learned and responsible citizens of our Jewish community and our world.

You should have received information regarding your child's class placement in the mail. Let us assure you that a great deal of care and thought has gone into making placement decisions. An important part of your child's education is to be in a class with new children each year and to learn to adapt to different teachers and classrooms. If you have any questions or concerns, please don't hesitate to contact the appropriate campus administrator.

We are so excited for the coming year. There are several new teachers joining our faculty on both campuses bringing fresh ideas and perspectives. A number of teachers and administrators have been busy over the summer preparing to implement new initiatives including our updated science curriculum and the new student siddur, *Halleli Nafshi*, as well as continuing our emphasis on effectively differentiating instruction in the classroom. We are poised for a successful year of teaching and learning.

Please take note of the important dates below. We hope that you will plan to attend these programs to meet other parents and teachers and to learn more about the curriculum and milestone events planned for this year.

- September 6<sup>th</sup>- Kindergarten Picnic
- September 7<sup>th</sup>- Fourth Grade Picnic
- September 12<sup>th</sup>- Kindergarten Back-to-School Night
- September 13<sup>th</sup>- Eighth Grade Back-to-School Night
- September 15<sup>th</sup>- First and Second Grades Back-to-School Night
- September 19<sup>th</sup>- Sixth and Seventh Grades Back-to-School Night
- September 20<sup>th</sup>- Third Grade Back-to-School Night
- September 21<sup>st</sup>- Fourth and Fifth Grades Back-to-School Night

We love the start of the school year with the excitement of new beginnings. Every September brings infinite possibilities and opportunities. We look forward to a wonderful partnership with you and a year filled with learning and growth for your children.

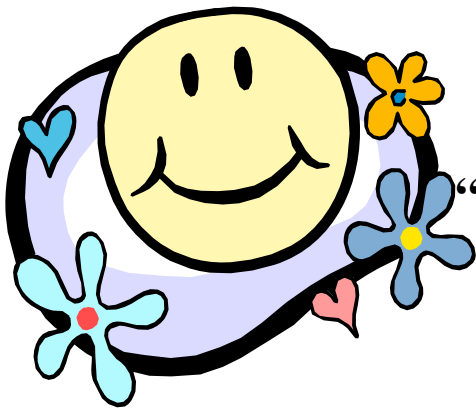
B' Shalom,

Barbara J. Shea  
Associate Head of School  
For Program and Instruction

Mindy S. Pincus, Ph.D  
Lower School Principal

Rabbi Scott Slarskey  
Upper School Principal

LEARNING & VALUES  
for Life



## “WELCOME TO KINDERGARTEN”

SHALOM!

Welcome to Kindergarten at Solomon Schechter Day School.  
We are so happy that you will be in our kindergarten starting in September.  
We know that you will have lots of fun making new friends and learning many new things.

We look forward to seeing you soon.

The Kindergarten Teachers

### PARENTS – YOUR CHILD WILL NEED THE FOLLOWING ITEMS FOR THE SCHOOL YEAR:

1. SMOCK OR OLD LARGE SHIRT FOR PAINTING
2. LARGE BACKPACK OR SCHOOL BAG
3. FULL CHANGE OF CLOTHES (SHIRT, PANTS, UNDERWEAR, SOCKS) –  
ALL LABELED AND PUT IN A ZIPLOCK OR PLASTIC BAG
4. SWEATER OR SWEATSHIRT – TO BE KEPT IN SCHOOL – LABELED
5. APPROXIMATELY 50 COINS FOR WEEKLY TZEDAKAH DONATION
6. A SUPPLY OF KIPPOT AND SUPPLY OF CLIPS (SEPHARDIC TYPE WITH A BIGGER  
BAND DOES NOT NEED CLIPS) – REQUIRED FOR BOYS ; OPTIONAL FOR GIRLS
7. TWO (2) STURDY, LAMINATED FOLDERS WITH POCKETS FOR  
TRANSPORTATION OF PAPERS TO AND FROM SCHOOL
8. TWO (2) BOXES OF ODOR-FREE WASHABLE MARKERS
9. TWO (2) BOXES OF SHARPENED COLORED PENCILS

**PLEASE LABEL ALL ITEMS**

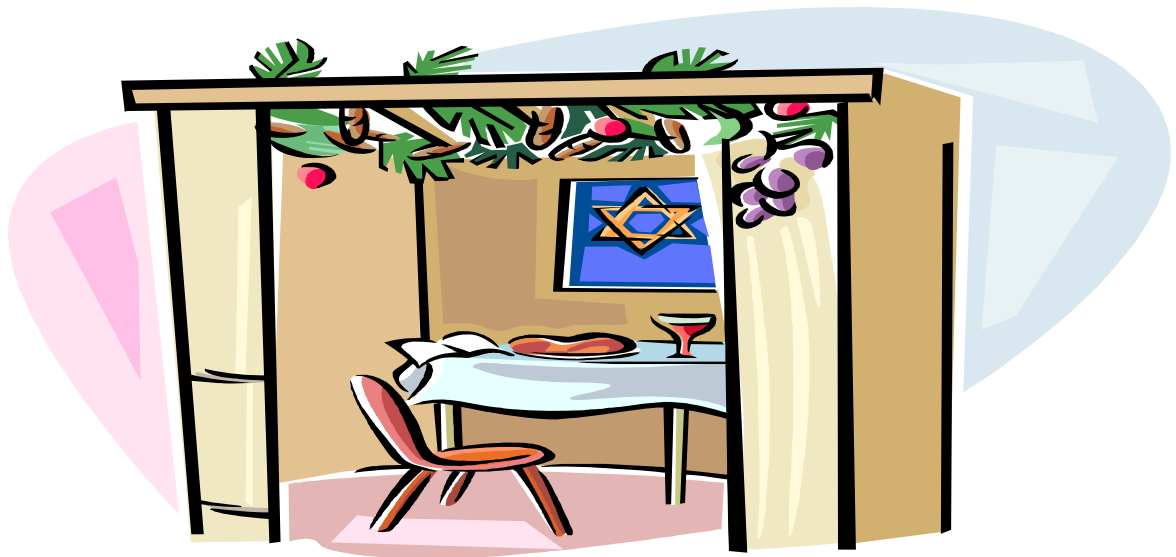
**(ESPECIALLY KIPPOT)**

**WITH YOUR CHILD’S FIRST AND LAST NAMES**

# SUNDAES IN THE SUKKAH!

Sunday, October 16<sup>th</sup>

3:00PM - 4:30PM



ALL KINDERGARTEN FAMILIES ARE INVITED TO  
THE LOWER SCHOOL SUKKAH  
FOR  
ICE CREAM, MUSIC AND  
THE CHANCE TO PLAY WITH FRIENDS!



RSVP to the Kindergarten Grade Reps

Barbra Litwin-Cutler at [babs-litwin@hotmail.com](mailto:babs-litwin@hotmail.com)

Nyna Urovitch at [nynaurovitch@gmail.com](mailto:nynaurovitch@gmail.com)



Solomon Schechter Day School  
of Greater Boston  
Parent Association

# Annual Kindergarten Family Picnic

Tuesday, September 6th

6:00 P.M. ~ 7:30 P.M.

Shaller Campus, Stein Circle

*On the field behind the school*

*This is a chance for the incoming Kindergarteners  
and their families to schmooze.*

*Each family should bring a dairy picnic dinner and blanket.*

*Dessert is provided by the Parent Association.*

For more information please call Barbara Litwin-Cutler at 617-327-6743,  
or Nyna Urovitch at 617-734-7993.



Solomon Schechter Day School  
Of Greater Boston  
Parent Association

**SOLOMON SCHECHTER DAY SCHOOL  
KINDERGARTEN SCHEDULE  
2011-2012 5771-5772**

We are looking forward to welcoming our newest students into our school. **On Thursday, September 8, one half of the children in each class will be spending one hour and forty-five minutes in their classroom, either from 9:00-10:45 am or from 12:30-2:15 pm.** Parents are asked to remain with their children during the first part of these sessions.

We have arranged the schedule below, and apologize for any difficulty it may present for working parents, because the teachers feel that it works best for the children when they have an opportunity to meet in a smaller group setting and for a shorter period of time. If you have any concerns about your child's orientation time, please call Ellen Shuster at 617.964.7765 and she will try to rearrange your schedule.

**Teacher: Sondra Kaminsky**

**Morning (9:00 – 10:45) Ben Barrocas, Gavi Berkman, Jordan Cutler,  
Gabe Fadlon, Lea Goldenberg, Seth Korn,  
Evan Roffman, Ilan Sherman-Kadish**

**Afternoon (12:30 – 2:15) Sasha Linden, Alon Lis, Sammy Nathanson, Roei Peer,  
Natalie Rabinovitz, Daphna Wihl, Joshua Wolf**

**Teacher: Naomi Katz Mintz**

**Morning (9:00 – 10:45) Ari Clark, Jada Cohen, Naomi Dolgoff, Gabriel Friedman,  
Nava Goldstein, Liana Groysberg, Stassy Kimel**

**Afternoon (12:30 – 2:15) Jared Marcus, Ari Menzin, Ariella Raby, Omri Reichman,  
Zach Weiskopf, Matthew Wener, Fiona Williamson**

**Teacher: Judi Rapaport**

**Morning (9:00 – 10:45) Noah Fish, Abigail Goldstein, Brad Hamermesh,  
Jacob Joseph, Maya Kamer, Miles Katz, Alex Lincoln**

**Afternoon (12:30 – 2:15) Eitan Porath, Samantha Rosenzweig, Maya Shammay,  
Emma Shay-Tannas, Sabrina Strapp, Elijah Sullivan,  
Asher Weil**

**Teacher: Lauren Ayzenberg**

**Morning (9:00 – 10:45) Nadav Borensztajn, Sophie Berk, Avigail Hason,  
Jill Kramer, Oz Madar, Adam Rotberg, Zachary Zalvan**

**Afternoon (12:30 – 2:15) Sarah Burd, Harrison Sigel, Ariel Skolnick, Elle Sohn,  
Avi Torres, Eli Williams**

# SOLOMON SCHECHTER DAY SCHOOL OF GREATER BOSTON

## 5772 ~ 2011-2012

*Revised*

### 2011

#### SEPTEMBER

1 Th New Teachers  
 5 M Labor Day ~ CLOSED  
 6-7 Tu,W Staff Days  
 8 Th 1<sup>st</sup> day classes (gr.1-8) full day  
 8 Th Kindergarten Orientation AM & PM  
 9 F 1st day Kindergarten  
 12 M Back-to-School Night Kg. 7:30  
 13 Tu Gr. 8 Play Mtg. and Back-to-School Night 6:30  
 15 Th Gr. 1&2 Back-to-School Night 7:30  
 19 M Gr.6 *Bar/Bat Mitzvah* Parent Mtg.7:00  
 19 M Back-to-School Night Gr. 6&7 7:30  
 20 Tu Gr.3 Back-to-School Night 7:30  
 21 W Gr. 4 & 5 Back-to-School Night 7:00  
 28 W *Erev Rosh Hashanah* ~ 2:00/2:10 Dismissal  
 29-30 Th-F *Rosh Hashanah* I & II ~ CLOSED

#### OCTOBER

7 F *Erev Yom Kippur* ~ 11:25/11:40 dismissal  
 8 Sa *Yom Kippur*  
 10 M Columbus Day ~ REGULAR CLASSES  
 12 W *Erev Sukkot* ~ 2:00/2:10 dismissal  
 13-14 Th-F Sukkot ~ CLOSED  
 19 W *Hoshanah Rabbah*  
*Erev Sh'mini Atzeret* ~ 2:00/2:10 dismissal  
 20 Th *Shemini Atzeret* ~ CLOSED  
 21 F *Simchat Torah* ~ CLOSED

#### NOVEMBER

\*11 F Parent-Teacher Conferences until 2:30 p.m. ~ NO CLASSES  
 \*18 F Begin 2:00/2:10 *Erev Shabbat* dismissal  
 23 W Staff 1/2 day 8:00-12:00 ~ NO CLASSES  
 24-25 Th-F Thanksgiving Recess ~ CLOSED  
 26 Sa Schechter's 50<sup>th</sup> Anniversary

#### DECEMBER

20 Tu Hanukkah 1<sup>st</sup> Candle ~ REGULAR CLASSES  
 26-30 M-F Winter Vacation ~ NO CLASSES

### 2012

#### JANUARY

2 M New Year's Day observed ~ CLOSED  
 3 Tu Classes resume  
 10 Tu Kindergarten Screening (NO Kg. classes)  
 12 Th Kindergarten Screening (Snow Date)  
 16 M Martin Luther King Jr. Day ~ CLOSED

#### FEBRUARY

20-24 M-F February Vacation ~ NO CLASSES  
 27 M Classes resume

#### MARCH

2 F Resume 3:00/3:10 *Erev Shabbat* dismissal  
 4 Su *Mitzvah Sunday*  
 8 Th Purim Program 11:25/11:40 dismissal/Staff half day & luncheon  
 21 W Parent-Teacher Conferences ~ NO CLASSES

#### APRIL

6 F *Erev Pesach*/1<sup>st</sup> Seder ~ CLOSED  
 9-16 M-M *Pesach* Vacation ~ CLOSED  
 17 Tu Classes resume

#### MAY

10 Th *Lag B'Omer* observed ~ REGULAR CLASSES  
 11 F Grandparents' & Special Visitors' Day  
 26 Sa *Erev Shavuot*  
 27 Su *Shavuot* I  
 28 M *Shavuot* II & Memorial Day ~ CLOSED

#### JUNE

19 Tu Graduation  
 20 W Last Day of Classes 11:25/11:40 dismissal & Staff 1/2 day PM  
 21-22 Th-F Staff Days



## **Google Calendar for Schechter is here! Schechter has a new iPhone App too!**

**Download the iPhone App today** – Visit the App Store on your iPhone, iPod Touch, or iPad and keep up-to-date on all that's happening at Schechter.

With this app you'll have on-the-go access to SSDS website information:

- View the school calendar and save events of your choice to your personal iCal calendar.
- Read our articles and view school notices and announcements.
- Get general information such as school contacts, programs, and open houses.

**Use Google Calendar to track school events** – The Schechter calendar is available for you online using Google calendar.

With Google Calendar you will have up to date access to the SSDS calendar:

- Adding the Schechter calendar to your personal Google calendar
- Subscribing to the Schechter calendar in MS Outlook or iCal (MAC)

### **Displaying SSDS events in your personal Google calendar account**

To display the SSDS calendar within your personal Google calendar, first log in to your Google calendar account. Next, click on the Google calendar button on our website; you will now be prompted to add the SSDS calendar to your own calendar display.



### **Subscribing to the SSDS Google calendar in MS Outlook or iCal**

To subscribe to the SSDS Google calendar, you must first add the SSDS calendar to your personal Google calendar (see above).

In Google Calendar go to Settings (top right of the screen) and select Calendar settings → Calendars. Next, click on the SSDS Boston Main Calendar. Look for Calendar Address and click the iCal button. Copy the address. You will use this address to subscribe to the SSDS calendar in MS Outlook and iCal.

For instructions on how to subscribe to a public calendar, please consult your MS Outlook or iCal help documentation.

# IMPORTANT DATES TO REMEMBER\*

## KINDERGARTEN SPECIAL DATES

THURS., SEPT. 8 – ORIENTATION AM & PM  
FRI., SEPT. 9 – FIRST FULL DAY OF KINDERGARTEN  
MON., SEPT. 12 – BACK-TO-SCHOOL NIGHT – 7:30 PM  
– BACK-TO-SCHOOL SCHMOOZE – 7:00 PM  
TUES., JAN.10 – KG. SCREENING – NO KG. CLASSES  
THURS., JAN. 12 – KG. SCREENING – (SNOW DATE)  
FRI., JAN 20 – K-1 & K-2 SHABBAT - 8:10 AM  
FRI., JAN 27 – K-3 & K-4 SHABBAT - 8:10 AM  
FRI., FEB 3 – KG. SHABBAT - 8:10 AM (SNOW DATE)  
TUES., MARCH 20 – FAMILY MATH FAIR – 6:30 PM – WELLS  
FRI., MAY 25 – KG. SHAVUOT – 8:10 AM

## GRADE 1 SPECIAL DATES

THURS., SEPT. 15 – BACK-TO-SCHOOL NIGHT – 7:30 PM  
– BACK-TO-SCHOOL SCHMOOZE – 7:00 PM  
WED., DEC. 21 – GR. 1 HANUKKAH CELEBRATION – 8:10 AM  
TUES., MARCH 20 – FAMILY MATH FAIR – 6:30 PM – WELLS  
TUES., MAY 1 – GR. 1 PARENT SIDDUR WORKSHOP- 7:30 PM  
TUES., MAY 15 – SIDDUR PARTY – 1(1) – 8:10 AM  
WED., MAY 16 – SIDDUR PARTY – 1(2) – 8:10 AM  
FRI., MAY 18 – SIDDUR PARTY – 1 (3) – 8:10 AM  
TUES., JUNE 5 – AUTHORS' TEA – 1(2) – 8:10 AM  
WED., JUNE 6 – AUTHORS' TEA – 1(1) – 8:10 AM  
FRI., JUNE 8 – AUTHOR'S TEA – 1(3) – 8:10 AM

## GRADE 2 SPECIAL DATES

THURS., SEPT. 15 – BACK-TO-SCHOOL NIGHT – 7:30 PM  
– BACK-TO-SCHOOL SCHMOOZE – 7:00 PM  
THURS., DEC. 22 – GR. 2 HANUKKAH CELEBRATION – 8:10 AM  
TUES., FEB. 7 – GR. 2 FAMILY JOURNEYS 2(4) – 8:10 AM  
WED., FEB. 8 – GR. 2 FAMILY JOURNEYS 2(2) – 8:10 AM  
FRI., FEB. 10 – GR. 2 FAMILY JOURNEYS 2(1) & 2(2)  
– 8:10 AM (SNOW DATE)  
TUES., FEB. 14 – GR. 2 FAMILY JOURNEYS 2(1) – 8:10 AM  
THURS., FEB. 16 – GR. 2 FAMILY JOURNEYS 2(4)  
– 8:10 AM (SNOW DATE)  
TUES., MARCH 20 – FAMILY MATH FAIR – 6:30 PM – WELLS  
THURS., JUNE 7 – AUTHORS' TEA – 2(2) - 8:10 AM  
MON., JUNE 11 – AUTHORS' TEA – 2(1) – 8:10 AM  
FRI., JUNE 15 – AUTHOR'S TEA – 2(4) – 8:10 AM

## GRADE 3 SPECIAL DATES

TUES., SEPT. 20 – BACK TO SCHOOL NIGHT – 7:30 PM  
– BACK-TO-SCHOOL SCHMOOZE – 7:00 PM  
TUES., DEC. 20 – STATE HOUSE CONCERT – 11:00 AM  
THURS., MARCH 1 – GR. 3 PARENT TANAKH WORKSHOP – 7:30 PM  
TUES., MARCH 20 – GR. 3(1)/3(2) TANAKH CELEBRATION – 8:10 AM  
FRI., MARCH 23 – GR. 3(3)/3(4) TANAKH CELEBRATION – 8:10 AM  
TUES., MARCH 20 – FAMILY MATH FAIR – 6:30 PM – WELLS  
TUES., MAY 22 – GR. 3-4 PARENT TRANSITION MTG – 7:30 PM – WELLS  
THURS., MAY 31 – STATE FAIR – 3(2) – 8:10 AM  
FRI., JUNE 1 – STATE FAIR – 3(3) – 8:10 AM  
MON., JUNE 4 – STATE FAIR – 3(1) – 8:10 AM  
TUES., JUNE 12 – STATE FAIR – 3(4) – 8:10 AM  
THURS., JUNE 14 – GR. 3 STEP UP DAY – 11:00 – 2:00 – WELLS

## GRADE 4 SPECIAL DATES

WED., SEPT. 7 – PICNIC – 5:30 PM  
WED., SEPT. 21 – BACK-TO-SCHOOL NIGHT – 7:00 PM  
– BACK-TO-SCHOOL SCHMOOZE – 6:30 PM  
FRI., NOV. 11 – PARENT-TEACHER CONFERENCES – NO CLASSES  
SAT., JAN. 28 – MELAVEH MALKAH – 6:30 PM  
SUN., MARCH 18 – SCIENCE FAIR – 10:00 AM  
TUE., MARCH 20 – K-4 MATH FAIR – 6:30 PM  
WED., MARCH 21 – PARENT-TEACHER CONFERENCES – NO CLASSES  
WED., JUNE 13 – POETRY FESTIVAL – 8:00AM  
THURS., JUNE 14 – POETRY FESTIVAL – 8:00AM

## GRADE 5 SPECIAL DATES

WED., SEPT. 21 – BACK-TO-SCHOOL NIGHT – 7:00 PM  
– BACK-TO-SCHOOL SCHMOOZE – 6:30 PM  
FRI., NOV. 11 – PARENT-TEACHER CONFERENCES – NO CLASSES  
FRI., JAN. 6 – SHABBATON @ SSDS  
SAT., JAN. 7 – SHABBATON @ SSDS  
TUES., FEB. 14 – SHIUR B'NEVI'IM – 8:00 AM  
TUES., MARCH 6 – PARENT PUBERTY MEETING – 7:30 PM  
WED., MARCH 14 – PARENT ERB MEETING – 8:00 AM  
SUN., MARCH 18 – SCIENCE FAIR – 10:00 AM  
TUES., MARCH 20 – 5<sup>TH</sup> GRADE PRESENTATIONS – MATH FAIR – 6:30PM  
WED., MARCH 21 – PARENT-TEACHER CONFERENCES – NO CLASSES  
MON. – THURS. MARCH 26-29 – ERB TESTING  
WED., MAY 9 – TRANSITION MEETING 5<sup>TH</sup> TO 6<sup>TH</sup> GRADE – 7:30 PM

\*DATES ARE CORRECT AS OF AUGUST 2011  
PLEASE REFER TO THE SHAVUON FOR UPDATES.



## **GRADE 6 SPECIAL DATES**

TUES., SEPT. 13 – SIDDUR PRESENTATION – 8:00 AM  
MON., SEPT. 19 – PARENT BAR/BAT MITZVAH MEETING – 7:00 PM  
MON., SEPT. 19 – BACK-TO-SCHOOL NIGHT – 7:30 PM  
THURS., SEPT. 22 – 3:10 PM DISMISSAL  
WED., OCT. 5 – 3:10 PM DISMISSAL  
THURS., NOV. 3 – 3:10 PM DISMISSAL  
FRI., NOV. 11 – PARENT-TEACHER CONFERENCES – NO CLASSES  
MON.-THURS., NOV. 15-NOV. 17 – SCIENCE WEEK  
THURS., DEC. 1 – 3:10 PM DISMISSAL  
WED., DEC 21 – 3:10 PM DISMISSAL  
FRI., DEC. 23 – 1:00 PM BASKETBALL GAME  
BETWEEN 8<sup>TH</sup> GRADE STUDENTS AND SSDS FACULTY  
TUES., JAN. 10 – 3:10 PM DISMISSAL  
TUES., JAN 31 – 3:10 PM DISMISSAL  
WED., FEB 15 – 3:10 PM DISMISSAL  
TUES., MARCH 13 – 3:10 PM DISMISSAL  
WED., MARCH 14 – PARENT ERB MEETING – 8:00 AM  
SUN., MARCH 18 – SCIENCE FAIR – 10:00 AM  
WED., MARCH 21 – PARENT-TEACHER CONFERENCES –NO CLASSES  
MON.-THURS. MARCH 26-19 – ERB TESTING  
TUES., APRIL 3 – 3:10 PM DISMISSAL  
WED., APRIL 18 – 3:10 PM DISMISSAL  
TUES., MAY 8 – 3:10 PM DISMISSAL  
WED., MAY 24 – TRANSITION MEETING 6<sup>TH</sup> –7<sup>TH</sup> GRADE – 7:30 PM  
WED., MAY 30 – TALLIT AND TEFILLIN PROGRAM – 8:00 AM  
THURS., JUNE 7 – 3:10 PM DISMISSAL  
MON., JUNE 11 – 3:10 PM DISMISSAL

## **GRADE 7 SPECIAL DATES**

MON., SEPT. 19 – BACK-TO-SCHOOL NIGHT – 7:30 PM  
– BACK-TO-SCHOOL SCHMOOZE – 7:00 PM  
THUR., SEPT 22 – 3:10 PM DISMISSAL  
WED., OCT 5 – 3:10 PM DISMISSAL  
THURS., NOV. 3 – 3:10 PM DISMISSAL  
FRI., NOV. 11 – PARENT-TEACHER CONFERENCES – NO CLASSES  
THURS., DEC. 1 – 3:10 PM DISMISSAL  
WED., DEC. 21 – 3:10 PM DISMISSAL  
FRI., DEC. 23 – 1:00 PM BASKETBALL GAME  
BETWEEN 8<sup>TH</sup> GRADE STUDENTS AND SSDS FACULTY  
TUES., JAN. 10 – 3:10 PM DISMISSAL  
TUES., JAN. 31 – 3:10 PM DISMISSAL  
WED., FEB. 15 – 3:10 PM DISMISSAL  
TUES., MARCH 13 – B'NAI MITZVAH MILESTONE – 8:00 AM  
TUES., MARCH 13 – 3:10 PM DISMISSAL  
WED., MARCH 14 – PARENT ERB MEETING – 8:00 AM  
SUN., MARCH 18 – SCIENCE FAIR – 10:00 AM  
WED., MARCH 21 – PARENT-TEACHER CONFERENCES –NO CLASSES  
MON. - THURS. – MARCH 26-29 – ERB TESTING  
TUES., APRIL 3 – 3:10 PM DISMISSAL  
WED., APRIL 18 – 3:10 PM DISMISSAL  
TUES., MAY 8 – 3:10 PM DISMISSAL  
WED., MAY 16 – TRANSITION MEETING 7<sup>TH</sup> - 8<sup>TH</sup> GRADE – 7:30 PM  
THURS., JUNE 7 – 3:10 PM DISMISSAL  
MON., JUNE 11 – 3:10 PM DISMISSAL  
TUES. - THURS., JUNE 12-14 – WASHINGTON, DC TRIP

## **GRADE 8 SPECIAL DATES**

TUES., SEPT. 13 – PLAY AUDITIONS – 4:15 PM  
TUES., SEPT. 13 – PLAY PARENT MEETING – 6:30 PM  
TUES., SEPT. 13 – BACK-TO-SCHOOL NIGHT – 7:30 PM  
WED., SEPT. 14 – PLAY AUDITIONS – 4:15 PM  
THURS., SEPT. 15 – PLAY AUDITIONS – 4:15 PM  
THURS., SEPT. 22 – 3:10 PM DISMISSAL  
WED., OCT. 5 – 3:10 PM DISMISSAL  
WED., OCT. 19 – REALI SCHOOL ARRIVES  
WED., OCT. 26 – REALI SCHOOL DEPARTS  
WED., OCT. 26 – ISRAEL STUDY TOUR PARENT MEETING – 7:30 PM  
THURS., NOV. 3 – 3:10 PM DISMISSAL  
FRI., NOV. 11 – PARENT-TEACHER CONFERENCES – NO CLASSES  
THURS., DEC. 1 – 3:10 PM DISMISSAL  
WED., DEC. 21 – 3:10 PM DISMISSAL  
FRI., DEC. 23 – 1:00 PM BASKETBALL GAME  
BETWEEN 8<sup>TH</sup> GRADE STUDENTS AND SSDS FACULTY  
MON-THURS, JAN. 9 – JAN. 12  
PLAY TECH WEEK, PINE MANOR (3:30 PM- 9:00 PM)  
FRI., JAN 13 - PLAY REHEARSAL, PINE MANOR 9:00AM – 2:00PM  
SUN., JAN 15 – 8<sup>TH</sup> GRADE PLAY AT PINE MANOR – 1:00 PM & 7:00 PM  
MON., JAN 16 – 8<sup>TH</sup> GRADE PLAY AT PINE MANOR – 7:00 PM  
TUES., JAN. 17 – SPECIAL SCHEDULE – 11:00 AM - 3:10 PM  
TUE., JAN. 31 – 3:10 PM DISMISSAL  
WED., FEB. 15 – 3:10 PM DISMISSAL  
WED., FEB 29 – ISRAEL STUDY TOUR MEETING – 7:30 PM  
SUN., MARCH 18 – SCIENCE FAIR – 10:00 AM  
WED., MARCH 21 – PARENT-TEACHER CONFERENCES – NO CLASSES  
WED., MARCH 21 – ISRAEL STUDY TOUR DEPARTS  
THURS., APRIL 5 – ISRAEL STUDY TOUR RETURNS  
WED., APRIL 18 – 3:10 PM DISMISSAL  
THURS., APRIL 19 - YOM HASHOAH PROGRAM – 8:00 AM  
TUES., MAY 8 – 3:10 PM DISMISSAL  
THURS., JUNE 7 – 3:10 PM DISMISSAL  
MON-FRI, JUNE 11- JUNE 14  
FINALS & GRADUATION REHEARSALS – DISMISSAL 3:10PM  
MON., JUNE 18 – RECOGNITION ASSEMBLY  
– 8:00 AM – 11:00 AM AT SSDS  
MON., JUNE 18 – GRADUATION REHEARSAL 11:30AM – 3:10 PM  
TUES., JUNE 19 – GRADUATION – 6:30PM (CLASS PICTURE @ 5:30 PM)



**Schechter Soccer will again be participating in  
Modell's Team Sports Weeks so please**

**Shop at Modell's**

**Receive 15% off your purchase**

**Between Friday, August 26th and Thursday, September 22nd**



**Receive 15% off of your purchases at Modells August 26<sup>th</sup> through September 22<sup>nd</sup> by just mentioning Schechter Soccer! Use this discount as often as you like. If \$500 or more is spent in total by our entire community under this promotion then the Soccer program will receive 5% of the gross. The program has made over \$600 in the past. This is a great way to save money on your kids sporting goods and support Schechter Soccer at the same time. You do not have to participate in Schechter Soccer to take advantage of this opportunity.**

For new and continuing Schechter families...

# **MITZVAH SUNDAY**

HONORING THE VALUES OF JOANN TOLEDANO

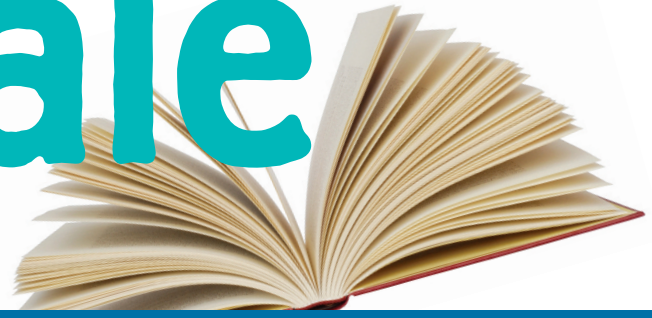
**Save the Date: March 4, 2012**

---

Announcing the 2012 Biennial

# Used Book Sale

Sunday, May 6, 2012  
8:00 am - 1:00 pm  
Solomon Schechter  
Lower School Back Field



Sponsored by the  
Solomon Schechter Day School  
of Greater Boston

- Collections now welcome at both campuses. Please mark your donations "UBS."
- All proceeds from the sale will benefit the Schechter libraries.
- All unsold books will be donated to a variety of local charitable organizations.

*Co-chairs: Stephanie Maroun and Arlene Bryer*



LEARNING & VALUES  
for Life

For more information, contact Stephanie Maroun  
at 617-630-4625 or [stephanie.maroun@ssdsboston.org](mailto:stephanie.maroun@ssdsboston.org)

60 Stein Circle, Newton, MA





Enabling children with special  
educational needs to become successful  
participants in the Jewish community

Dear Parents,

The Day School Program of Gateways: Access to Jewish Education, has just completed its ninth year of providing services to students and teachers in nine Boston area and suburban day schools. Our mission is to enable students with learning differences to succeed in the day school setting.

Both **speech-language therapy** and **occupational therapy** are available at Solomon Schechter Day School of Greater Boston. It has been a very successful partnership. We have services available at both the lower and upper school. Gateways services are provided for a tuition-based fee that is subsidized through fundraising and CJP support.

There are many advantages to having Gateways professionals at Schechter. The Gateways therapists work with students individually and in small groups both in and outside of the classroom. They collaborate with teachers to share ideas that benefit a wide range of students. Most importantly, they maintain a close working relationship with the child's teacher and the school's staff to help ensure the child's success.

If your child is already involved in our program, then you should have already received your service plan for 2011-2012. **If you are interested in pursuing services from Gateways, you should first contact Phyllis Wilker or Shelly Levy.**

Sincerely,

Sharon Goldstein  
Day School Program Director  
Gateways

Arlene Remz  
Executive Director, Gateways



## **WELCOME TO THE PARENT ASSOCIATION!**

Whether you are new to Schechter or a returning family, there are many opportunities to participate in the life of the school through the PA.

### **Who is the Parent Association? YOU ARE!**

Just as your child joins the student community on the first day of school, you too begin a long relationship with parents and teachers that will last beyond your Schechter years. These relationships form in the pick-up line, at parent social gatherings, and most often through working side-by-side with other parents to enhance the school experience for our children.

Whether you work full-time or are a stay-at-home parent, there are many ways for you to participate so that you can feel connected to the Schechter community and show your children that you are committed to helping their school.

### **What does the Parent Association do? A LOT!**

From supporting creative arts & sciences programming to organizing pizza lunches, showing our appreciation for our teachers, lending support to families in need, and organizing family activities and social gatherings for parents, the PA provides the wonderful *extras* for all of us at Schechter.

The PA leadership also serves an important role in representing the voices of the parents to the administration and to the Board of Trustees. We meet regularly with administrators at both campuses and welcome input from all parents.

### **How can I participate? A LOT or a LITTLE!**

There are many ways to be involved -- whether by serving one pizza lunch or by committing to a project or role that requires more time and energy. You can be a room parent, help at programs, deliver a meal to a family in need, or come up with your own ideas. You can do as much or as little as your time allows -- it all helps build our community. This is YOUR Parent Association!

### **How do I get started?**

A list of the PA leadership is on the reverse side of this sheet. Feel free to contact your grade representative, or the PA Co-Chairs, if you have ideas or questions. We've also included a sheet entitled "Volunteer with the PA" that details a number of ways to get involved. Please check off your areas of interest and return the form at your earliest convenience.



## **PA LEADERSHIP 2011-12**

**Co-Chairs:** Ellen Jawitz & Terri Brown Preuss  
(ejawitz@hotmail.com) (tbrownpreuss@gmail.com)

**Treasurer:** Ken Metzger (ssdspatreasurer@gmail.com)

**Hesed Community:** Karen Dines & Kim Schawbel (Hesed@ssdsboston.org)

**Lower School Liaison:** Maura Epstein (mauraepstein@comcast.net)

**Intermediate Division Liaison:** Sharon Waller (sharonjwaller@gmail.com)

**Middle Division Liaison:** Barry Kann (bskann@aol.com)

### **Grade Representatives:**

- K: Barbra Litwin-Cutler (babs\_litwin@hotmail.com)  
Nyna Urovitch (nynaurovitch@gmail.com)
  
- 1: Becky Rabson (becky.rabson@gmail.com)  
Galit Heimlich (gpheimlich@gmail.com)
  
- 2: Luba Loewenberg (luba.olshan@gmail.com)  
Shira Lewin (shiralewin@hotmail.com)
  
- 3: Nancy Selig (nselig@verizon.net)  
Jim Noonan-Sloan (jameslnoonansloan@verizon.net)
  
- 4: Pam Adelstein (pamadelstein@hotmail.com)  
Beth Kozinn (bkozinn@urj.org)
  
- 5: Heidi Schwartz (heidi.kern.schwartz@gmail.com)  
Irene Bobilev (idbobilev@gmail.com)
  
- 6: Tammy Schneider (4schneiders@comcast.net)  
Lisa Joseph (eitanj@rcn.com)
  
- 7: Sherry Brettschneider (sherrybrett@comcast.net)  
Sharon Katz (katzsharon@comcast.net)
  
- 8: Rachel Pemstein (rkpemstein@gmail.com)  
Tracy Schneider (tracys120@yahoo.com)



## **CALENDAR OF PA EVENTS**

### **Kindergarten Picnic**

*Tues. 9/6, 6:00-7:30 pm, Lower School Playground, Rain or shine!*  
Bring a dairy or pareve dinner and a blanket. Dessert will be provided.

### **4<sup>th</sup> Grade Picnic**

*Wed. 9/7, 5:30-7:00 pm, Upper School Circle, Rain or shine!*  
Bring a dairy or pareve dinner and a blanket. Dessert will be provided.

### **Welcome Back Coffees**

*Thurs. 9/8, 8:15 am, at both campuses.* Get your children settled in the classroom and then come by for coffee with old and new friends.

### **Race You to the Swings!**

*Fridays, 9/9, 9/16 and 9/23, after dismissal.* Drop by the lower school playground to play & schmooze!

### **Back to School Night Schmoozes for K thru 7**

Meet ½ hour before program begins to reconnect with other parents. Light refreshments will be served.

### **Fall Family Hike**

*Sun. 9/25 at 2:00 pm.* Rain date 10/23. Details to follow!

### **Parent Association Open Meeting**

*Thurs. 10/6, 8:15 am, at the Lower School.* Learn about plans for the year and how you can get involved. Coffee and bagels will be served.

### **Schechter Single Parents Gathering with Kids**

*Sun., October 9, 12-2:00 pm.* Come celebrate fall with other single parents and children. Details to follow.

### **Family Table Delivery**

*Sun., October 16, 10:00 am – 1:00 pm at JF&CS in Waltham.* Pack and deliver groceries for families in need.

### **Kindergarten "Sundaes in the Sukkah"**

*Sun. 10/16, 3-4:30 pm, at the Lower School Sukkah.* Rain or shine!  
Meet your new friends for treats in the sukkah.

### **Book Fair and Family Fun Night**

*Week of November 7<sup>th</sup>.* More details to follow.

### **Annual Parent Social Event**

*Saturday Night, March 10<sup>th</sup>.* Enjoy an adults-only evening with other Schechter parents, teachers and staff. Details to follow.

### **Passover Vacation Movie**

*Thursday, April 12<sup>th</sup> at 10:45 am.* Meet up with friends to watch a family movie at the West Newton Cinema.

### **PA Annual Volunteer Appreciation Dinner**

*Sunday Evening, June 3<sup>rd</sup>*

**\*Look in the Shavuon and monthly PA Newsletter during the school year for additional PA events for adults and families!**



## **HESED COMMUNITY**

Hesed Coordinators: Kim Schawbel and Karen Dines

Solomon Schechter Day School is a remarkable school where our children learn, grow and flourish. But we are more than just a school. We are also a community of families who support each other – whether to celebrate or to offer comfort during the significant transitions in our lives.

When we perform acts of hesed, literally “loving kindness,” we and our children are reminded that we belong to a generous, loving Schechter community. Acts of hesed are especially important in times of family need: the arrival of a new baby; an immediate family member with an illness, recuperating from surgery or undergoing prolonged medical treatment; or the death of a family member.

Asking for help may be difficult; however we all need help at some point in our lives. Others truly want to help. All help is provided privately and with discretion. We are blessed to be part of a large, caring community. Small and large acts of hesed are welcome.

### **How Hesed Community Works**

By signing on, you agree only to receive emails about specific needs (with the family in need remaining anonymous) as they arise. If you are available to help with that specific need at that specific time, then you respond to the email. There is no obligation, but only an opportunity, to do service. Such opportunities might include providing a meal, helping with a ride or carpool, helping with errands and attending a shiva minyan.

### **Sign-up to be part of this wonderful community!**

To sign up to become a Schechter Hesed Community member, please send an email to [Hesed@ssdsboston.org](mailto:Hesed@ssdsboston.org) with your name and contact information.

If you already signed up last year, no need to re-register.

### **Let us know about a hesed need!**

For more information or to let us know of any families who may be dealing with an illness, death, birth or other issues and may need help please contact us.

Email: [\*\*Hesed@ssdsboston.org\*\*](mailto:Hesed@ssdsboston.org)

Phone: Kim Schawbel (781-444-6195) or Karen Dines (781-983-1810)

**Hesed is provided privately and with discretion.**



## **SSDS & FAMILY TABLE**

JF&CS Family Table, the largest kosher food pantry in eastern Massachusetts, provides healthy food on a monthly and emergency basis to individuals and families in need. The number of people being served has essentially doubled in the past few years as a result of the recession, and Family Table is presently serving almost 650 individuals every month.

Volunteering with Family Table provides a wonderful opportunity for families to experience hands-on tzedakah and make a difference in the lives of those who are less fortunate.

There are two ways Schechter families can help:

**(1) Volunteer at the “Distribution Day” for which Schechter has pledged to help:**

When: Sunday, 10/16, approx. 10:00 a.m. - 1:00 p.m

Where: Jewish Family & Children's Service  
1430 Main Street, Waltham, MA 02451

Volunteers will pack specific orders for recipient families, and then deliver to one or two recipients in the Greater Boston area.

**(2) Help fulfill Schechter’s commitment to Family Table to provide 45 cans of tuna each month.**

Consider adding a can of tuna to your shopping list. Bins are located near the entrance of each campus. Also make sure to bring in a can as tzedakah when your child celebrates a birthday or is a “Shabbat helper”!



## **Shopping Rewards - Benefit the PA as You Shop!**

Shop at the following local businesses and support SSDS at the same time! At the register, say, ***"Please stamp my receipt for Schechter."*** Use the enclosed envelope to collect the receipts and send them in to school. A percentage of each purchase you make benefits the Parent Association.

**The Butcherie** (Brookline)

**Israel Book Shop** (Brookline)

**Kolbo Fine Judaica** (Brookline) – ask to have your purchase credited to the school; no receipt needed.

### **Other everyday shopping can benefit the PA at no extra cost:**

**Box Tops:** pink rectangles are located on many products in your home including snacks, paper goods, cereal & more; just snip them and deposit them at each front desk. Full list available at [www.boxtops4education.com](http://www.boxtops4education.com).

**On-line shopping:** hundreds of web retailers contribute a percentage of your purchase when you designate the school and click through [www.boxtops4education.com](http://www.boxtops4education.com).

**Target:** "Take Charge of Education Program" – YOU Save, WE Gain!

When you shop with your Target Credit Card at Target, Target donates an amount equal to 1% of your purchases to the Schechter PA! In addition, YOU get 5% off your purchases at Target every time you use the card!

### **Here's What You Do:**

1. Open a Target Credit Card, Target Visa Card, or Target Debit Card (all called the "Red Card") by calling 1-800-316-6142, visiting [Target.com/tcoe](http://Target.com/tcoe), or visiting an in-store kiosk.
2. Sign up for the "Take Charge of Education" program by calling 1-800 316-6142, visiting [Target.com/tcoe](http://Target.com/tcoe) or an in-store kiosk. Then designate Schechter as your school for Target donations. Please see the Target website for further details and restrictions.

This could amount to significant contributions to the Parent Association. We really appreciate your help and support!!



# CALLING ALL PARENTS!

## WELCOME BACK COFFEES



- ✓ ReNew
- ✓ ReAcquaint
- ✓ ReFresh

Thursday, September 8<sup>th</sup>

Lower School - Music Room 8:15AM - 9AM

Upper School - Library 8:15AM - 9AM

# THE AFTERSCHOOL ADVENTURE AT-A-GLANCE

## SOLOMON SCHECHTER DAY SCHOOL

1. The Afterschool registration site is <http://www.asaponlinereg.com/Default.aspx?org=177>. Registration for all classes is online only.
2. The Afterschool Calendar provides up-to-date information on afterschool classes and events. The calendar can be viewed on the school website: <http://www.ssdsboston.org/afterschool/calendar.php> or via the Schechter iPhone app that you can download from the App Store -search for *SSDS Boston*.
3. For questions about any of the Afterschool Programs, please contact the Program Director, Penina Magid, at [penina.magid@ssdsboston.org](mailto:penina.magid@ssdsboston.org) or 617-630-4503.

### THE ENRICHMENT EXPERIENCE GRADES K-5

*Afterschool Enrichment complements the Schechter curriculum with a wide array of workshops and classes in the arts, science and technology, sports, music and more.*

- ✧ **For More Information:** See the 2011 Fall Enrichment Brochure (included in the August packet).
- ✧ **Registration:** Enrichment registration is *online only* at <http://www.asaponlinereg.com/Default.aspx?org=177>
- ✧ **Dates:** Classes run in 3 sessions - **Fall:** October 3, 2011- December 15, 2011  
**Winter:** January 10, 2012 - March 22; **Spring:** April 2, 2012 - June 8, 2012
- ✧ **Hours:** **Grades K-3** > 3:00 p.m. - 4:00 p.m. unless otherwise noted in brochure  
**Grades 4-5** > 3:15 p.m. - 4:15 p.m. unless otherwise noted in brochure
- ✧ **Notes:** **Many classes fill quickly, so register EARLY.**  
Make-up classes are offered at the end of the semester **if a teacher is absent.**  
Classes WILL RUN on early dismissal days in October 12 and October 19 from 2:00 - 3:00PM (Stein) and 2:15 - 3:15PM (Wells). There are no classes held on school holidays, half or full staff days.

### THE EXTENDED DAY PROGRAM GRADES K-8

*Whether your child is looking for lots of exciting activities, likes to unwind at the end of the school day, or relishes the opportunity to play and socialize with friends, he or she can come "home" after school to the **Extended Day** neighborhood. Extended Day is a free choice environment supervised by a caring, supportive and dynamic staff. Children can complete their homework in a teacher-supervised study hall and then participate in a variety of activities that cater to a wide range of interests or "hang out" with friends.*

- ✧ **For More Information:** Information about cost is included in the August Packet.
- ✧ **Registration:** Registration is *online only* at <http://www.asaponlinereg.com/Default.aspx?org=177>
- ✧ **Dates:** **Grades 1-8** > September 8, 2011 - June 19, 2012  
**Kindergarten Only** > September 12, 2011 - June 19, 2012
- ✧ **Hours:** **Grades K-3** > 3:00 p.m. to 6:15 p.m. **Grades 4-8** > 3:15 p.m. to 6:30 p.m.  
Friday closing times differ from October 14-April 6 due to Shabbat. A Friday Dismissal Calendar will be emailed to Extended Day families.

### AFTERSCHOOL HOUR GRADES K-5

*One hour of Afterschool coverage in our Extended Day Program.*

- ✧ **REGISTRATION:** Registration is *online only* at <http://www.asaponlinereg.com/Default.aspx?org=177>
- ✧ **DATES:** Fall ~ September 12, 2011 - December 23, 2011  
Winter ~ January 2, 2012 - March 30, 2012  
Spring ~ April 2, 2012 - June 15, 2012
- ✧ **Hours:** Grades K-3 > 3:00 p.m. - 4:00 p.m.  
Grades 4-5 > 3:15 p.m. - 4:15 p.m.  
Grades 6-8 > 4:15-5:15

## *The Afterschool Adventure At-A-Glance*

### **THE MUSIC STUDIO GRADES K-8**

REGISTRATION IS ONGOING. LESSON CONFIRMATION IS NEEDED PRIOR TO REGISTERING ONLINE.

*The Afterschool Music Studio offers music lessons for students in grades K-8. Lessons are offered Monday through Thursday.*

- ✧ **For More Information:** Program details including cost are included in the August Packet.
- ✧ **Registration:** Email Liz Chesarone at [liz.chesarone@ssdsboston.org](mailto:liz.chesarone@ssdsboston.org) to schedule a music lesson. You must have a confirmed music lesson day/time/instructor before you can register and pay online.
- ✧ **Dates:** Classes run in 2 sessions - **Fall:** September 19, 2011 - December 15, 2011  
**Winter/Spring:** January 3, 2012 - May 31, 2012
- ✧ **Hours:** **Grades K-3** > 3:00 p.m. - 5:45 p.m. (Monday through Thursday)  
**Grades 4-6** > 3:15 p.m. - 6:00 p.m. (Monday through Thursday)  
**Grades 6-8** > 4:15 p.m. - 6:00 p.m. (Monday through Thursday)
- ✧ **Cost:** \$39/30 minute lesson; \$60/60 minute lesson
- ✧ **Notes:** **Teacher's schedules fill quickly, so please register EARLY.**  
Make-up classes are offered at the end of the semester.

There are no lessons held on school holidays, half or full staff days or early dismissal days.

### **YOM KEF - STAFF DAY PROGRAMMING GRADES K-8**

Yom Kef is special programming and/or field trips for students on days when there are no scheduled classes for students but the school is open for staff workshops, meetings, or parent-teacher conferences. More information and registration instructions will be posted in the Shavuon and on the SSDS Afterschool Registration site at the beginning of the school year.

### **END-OF-YEAR EVENTS - MARK YOUR CALENDARS NOW!**

Join us for fun and exciting events throughout the school year. Below are some of the larger events. Information on other performances will be posted on our calendar. Mark your calendar now for the Afterschool BBQ on June 14, 2012!!

#### **Theatre Performances:**

- ✧ Upper School Fall Play (*Aladdin*) - February 7, 2012
- ✧ Upper School Spring Play - June 5, 2012
- ✧ Lower School Fall Play (*Fantastic Mr. Fox*) - December 15, 2011
- ✧ Lower School Winter Play - March 29, 2012
- ✧ Lower School Spring Play - June 7, 2012

#### **Musical Performances:**

- ✧ Lower School Music Recital (K-3) - May 16, 2012
- ✧ Upper School Music Recital (4-8) - May 24, 2012

#### **Dance Recital:**

- ✧ Lower School Dance Recital - May 21, 2012

### **CONTACT INFORMATION**

Penina Magid - Afterschool Director 617-630-4503 [penina.magid@ssdsboston.org](mailto:penina.magid@ssdsboston.org)

Emma Weisman - Upper School Site Coordinator 617-630-4510 [emma.weisman@ssdsboston.org](mailto:emma.weisman@ssdsboston.org)

Elise Blanken - Lower School Site Coordinator 617-630-4610 [elise.blanken@ssdsboston.org](mailto:elise.blanken@ssdsboston.org)

Liz Chesarone - Music Program Coordinator 617-630-4520 [liz.chesarone@ssdsboston.org](mailto:liz.chesarone@ssdsboston.org)

# ENRICHMENT PROGRAM CALENDAR ~ FALL 2011

Time	Monday	Tuesday	Wednesday	Thursday
<b><u>STEIN</u></b> 3:00-4:00	FaSolLa (3)  Jazz, Tap, Ballet (K-1)  Junior Carpenter (K-1)  Karate (K-1)  Sewing (2-3)  <i>Afterschool Hour</i>	Animals (K-3)  Engineering (8 wks) (K-1)  Fencing Intermediate (2-3)  Gym Games (K-1)  Photography (3)  Rainbow Choir (1-2)  <i>Afterschool Hour</i>	Chess (K-3)  Cooking (K-1)  Digital Video Magic (2-3)  DoReMi (3)  Flag Football (2-3)  <i>Afterschool Hour</i>	Animation Wizards (8 wks) (2-3)  Basketball (2-3)  I Got Rhythm (K)  Storybook Art (K-1)  Young Actors' Theatre <i>"Fantastic Mr. Fox"</i> (1-3) <i>Begins September 15th</i>  <i>Afterschool Hour</i>
4:00-5:00	Jazz, Tap (2-3)  Karate (2-3)	Fencing - Introductory (2-3)		
Time	Monday	Tuesday	Wednesday	Thursday
<b><u>WELLS</u></b> 3:15-4:15  Grades 4-5	Football  Typing 3:30-4:15  <i>Afterschool Hour</i>	Boy's Basketball  Early A.M. Basketball (gr. 6-8) 10/4 - 11/8  Musical Theatre (4-7) <i>"Aladdin"</i> 3:45-5:45  <i>Afterschool Hour</i>	Flying Machines  Sewing on The Machine  <i>Afterschool Hour</i>	Clay  Early A.M. Basketball (gr. 4-6) 12/2 - 1/13  Fencing  Digital Video Magic  <i>Afterschool Hour</i>
4:15-5:15	Set Design (4-8)	Musical Theatre (4-7) 3:45-5:45	Sewing on The Machine (4-8)	

## CLASS SCHEDULE FOR FALL 2011

Day	Dates	# Classes	Make-Up Class Date
Monday	October 3 - December 12	11	December 19
Tuesday	October 4 - December 13	11	December 20
Wednesday	October 5 - December 14	10	December 21
Thursday	October 6 - December 15	8	December 22



## AlertNow Rapid Notification Service Emergency Contact System

The safety of the students, faculty and staff at Solomon Schechter is a top priority. For that reason, we use the Saf-T-Net ALERTNOW Rapid Notification Service, which allows us to send a message to ALL parents and/or faculty/staff on multiple contact numbers and emails within minutes after an emergency or incident has occurred at the school. Our goal is to give our parents peace-of-mind knowing that if an emergency should happen, you will be informed immediately.

The ALERTNOW service is ONLY used for emergency purposes and time-sensitive announcements, such as early school closings due to inclement weather or changes to events and programs that require immediate notification. It is also be used to notify you in the unlikely event of an extreme emergency, such as fire. The service will not be used to announce school cancellation on snow days.

The success of this system depends upon the school having accurate and up-to-date contact information for all families. Our file includes home, work and cell phone numbers, along with personal and work email addresses for all parents. Please be sure to give us your email addresses on the Email Communication Form. If you need to modify any of your contact information during the year, please contact Janice Goldstein by email at [janice.goldstein@ssdsboston.org](mailto:janice.goldstein@ssdsboston.org) or by phone at 617-630-4515.

### Important:

Your caller ID will display the number 617-928-9100 (Shoolman Campus front desk) anytime a call is coming through from the school. Caller ID will not display a name associated with the number. If you miss the call, please do not call the school back until you first listen to your message to determine if it is a matter that requires you to return the call.

Extreme Emergency Notification (such as fire): Your caller ID will display 411 any time an emergency call is coming through from the school. Caller ID will not display a name associated with the number.

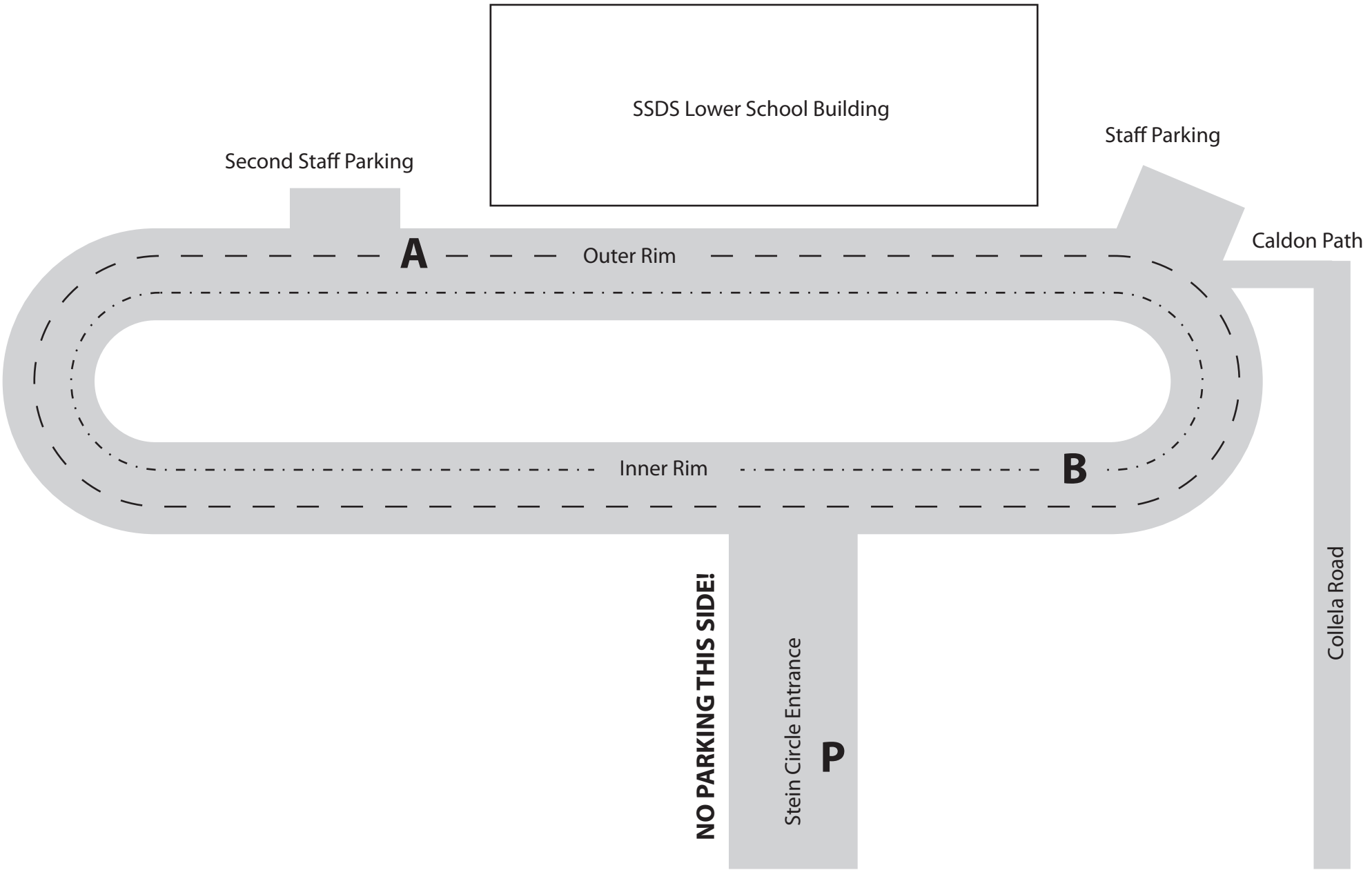
The system will leave a message on your voicemail or answering machine.

\*\* If you have such things as Telemarketer Zapper or Privacy Director on your telephone lines, you may not receive the call. For example, with Privacy Director all incoming calls are rerouted, and the callers must identify themselves for the call to go through. Because our system is automated, it will not identify itself. Thus, the call will not get through to your number.

You may also need to add the ALERTNOW email address to your "safe list" so the email will come through. The emails will be coming from [noreply@alertnow.com](mailto:noreply@alertnow.com).

Be sure to say "Hello" when you answer the phone but do not keep saying hello.

Thank you!



SSDS Lower School Building

Second Staff Parking

Staff Parking

**A**

Outer Rim

Caldon Path

Inner Rim

**B**

**NO PARKING THIS SIDE!**

Stein Circle Entrance

**P**

Collela Road



## **TRAFFIC AND SAFETY GUIDELINES** **~ LOWER SCHOOL ~**

Safety is our number one priority during arrival and dismissal. Please give your full attention to the job at hand. **Cell phone use is not permitted during the loading and unloading process or while driving on Stein Circle during drop off or pick up times.** Our goal is to make arrival and dismissal safe and courteous for everyone including students, parents, faculty and our neighbors. Please refer to the carpool map as you read through these procedures.

### **MORNING DROP-OFF**

***If you want to walk your child into the school before 8:10 you may:***

- Park on Colella Road and walk to the building via Caldon Path.
- Park on the right side of the entrance to Stein Circle (Point P) and walk to the building **via the sidewalk.**
- Park at either far end of the outer rim of the circle and walk to the building **via the sidewalk.**

***Please do not park in front of the school, along the inner rim of the circle or in the parking lots. Please be sure to use the sidewalks and do not walk your child across traffic.***

***If you want to drop your child off from your car:***

- Please pull as far forward as possible (up to Point A) to drop off your child. It is important to pull all the way up even if there are no cars behind you.
- If the area in front of the building is full, please wait until the line clears. A staff member will instruct you when you should proceed forward. Please wait to leave until the car in front of you departs.

### **AFTERNOON PICK-UP**

***If you want to meet your child on the front steps:***

- Please park as directed above for walking children to the building for arrival.
- Walk to the front steps and give your child's name to the staff member who will meet you outside the building door. Please wait for your child outside being sure to leave the sidewalk clear for students who are walking to their cars.

***If you want to pick up your child in your car:***

- The first cars to arrive should line up on the outer rim directly in front of the building. When this line is full, cars should proceed around the inner rim of the circle and line up at Point B. A staff member will then direct cars to proceed to the curb for pick up.
- Your child's name will be called inside and your child will come out when your car has reached the curb for pick up.
- Please do not try to cut around cars in order to leave the line more quickly. You should remain in the curbside line until the car in front of you departs.

### **IMPORTANT SAFETY REMINDERS**

- Please respect the flashing lights and stop sign rule for school buses.
- Please do not use arrival or dismissal times for a quick conference with teachers. You may contact the teacher by phone or email with questions or to set up an appointment.
- Please do not block our neighbors' driveways. You should leave 5 feet between your car and each driveway.

**Reminder – Please Refer To The Stein Circle Carpool Map ↗**